

Before performing any service always follow applicable safety precautions.

## Bearing Puller Kit

**Affected Products:** 1" bearing (331001), 1-3/16" bearing (332001),  
1-1/2" bearing (332002), 2" bearing (333001)

**Affected Serial Range:** N/A

**Related Issue #:** N/A

### Issue Description:

To assist with the replacement of bearings a bearing puller kit is now available. The kit consists of a puller flange with forcing screw, (2) 3/4" threaded rods with nuts, and (2) 1/2" threaded rods with nuts.

**Stock code 931002.**

### Actions Required:

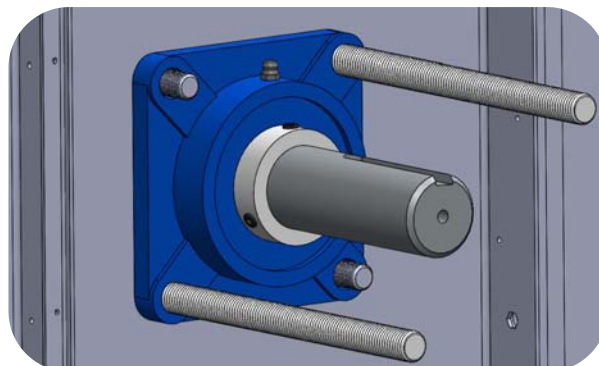
Starting in March of 2019 the bearing mounting holes are being tapped for new smokers and for replacement bearings. If a bearing is being removed with untapped holes:

- tap both mounting holes on the 1" and 1-3/16" bearings with a 1/2-13 plug tap.
- tap two holes diagonal from each other on the 1-1/2" and 2" bearings with a 3/4-10 plug tap.

Leave the bearing mounting bolts in place when tapping the other mounting holes to help hold the bearing in place. Be sure tap the holes as straight as possible so that the bearing puller is not pulling at an angle.

To use the tool:

1. Remove all of the nuts on the bearing mounting bolts and remove the bolts for the holes being used for the bearing puller threaded rods.
2. Loosen the set screws holding the bearing to the axle.
3. Thread the rods into the tapped mounting holes being sure to not thread the rods further than the bearing casting. If the rods are threaded into the liner of the smoker, or the motor mount plate, the puller will not work.

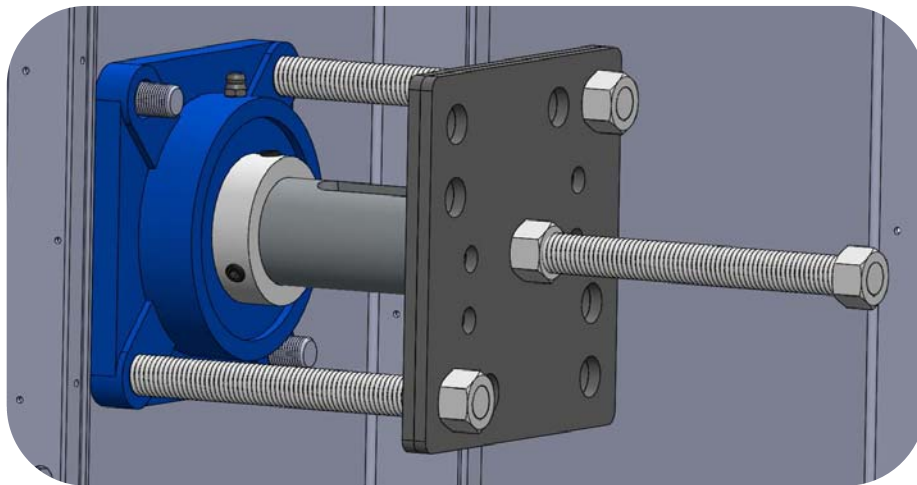
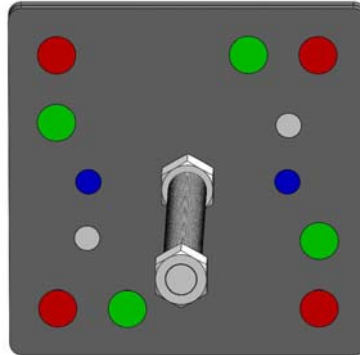


**Actions Required (continued):**

4. With the forcing screw all of the way out, attach the puller flange to the threaded rods using the appropriate nuts to tighten the puller flange against the axle.

Corresponding holes for each bearing:

- 1" bearing - blue
- 1-3/16" bearing - grey
- 1-1/2" bearing - green
- 2" bearing - red



5. Tighten the forcing screw with a 1-1/8" wrench or impact gun, pushing the puller flange away from the axle and pulling the bearing off of the axle.

**Additional Comments:**

**Secondary Distribution:**

Service technicians within the Distributor's organization.

Service companies.

**For Additional Information:**

Southern Pride Technical Support: (800) 437-2679