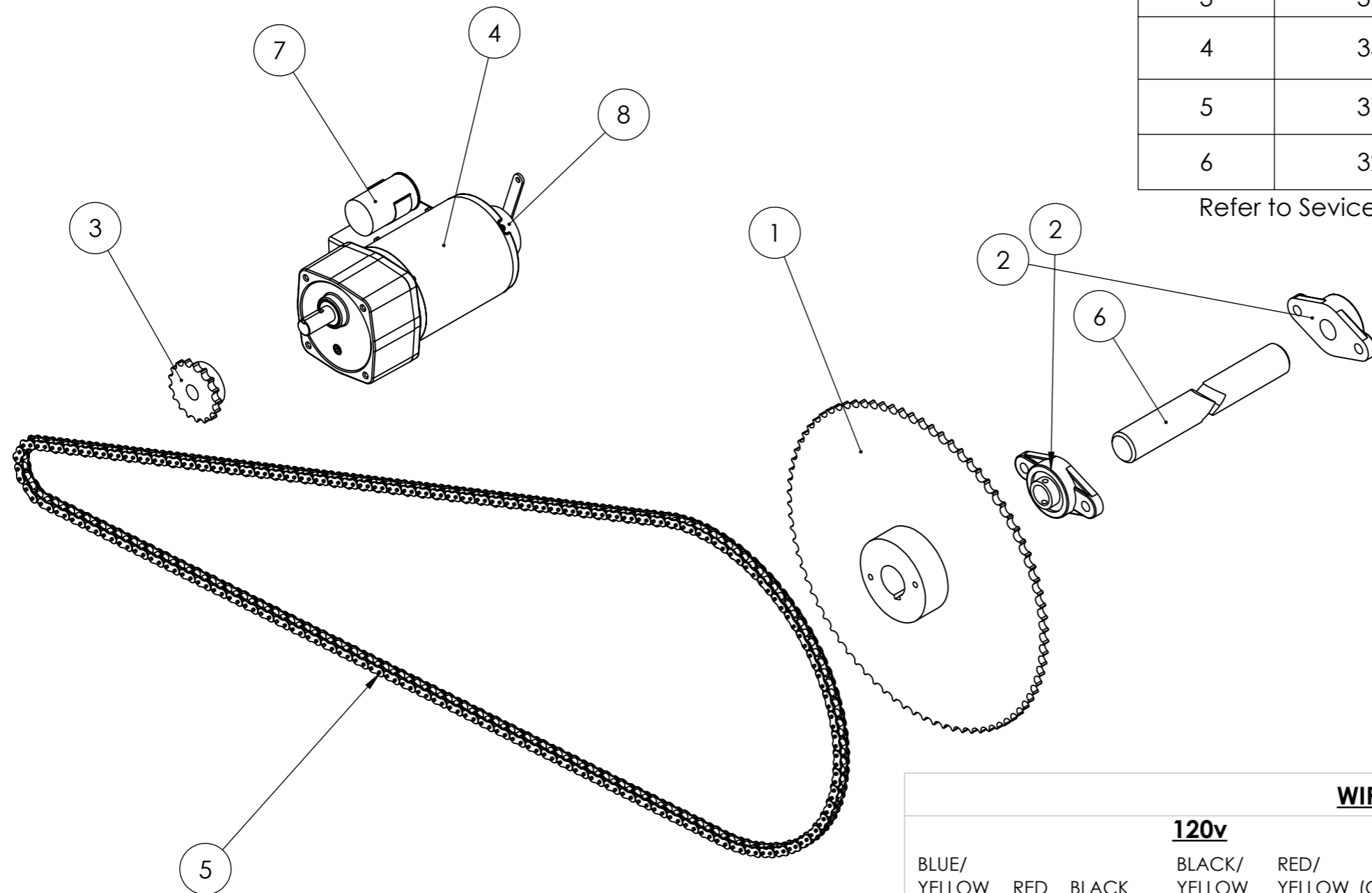
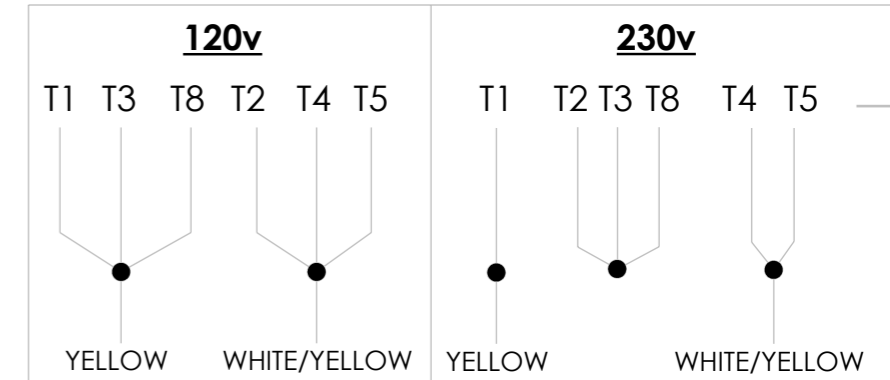


| ITEM NO. | PART NUMBER | DESCRIPTION | Default/ QTY. |
|----------|-------------|--|---------------|
| 1 | 372012 | 80 TOOTH SPROCKET | 1 |
| 2 | 331001 | FLANGE BEARING (1") | 2 |
| 3 | 372008 | 12 TOOTH SPROCKET | 1 |
| 4 | 351001 | ROTISSERIE DRIVE MOTOR (INCLUDES ITEM #7 AND #8) | 1 |
| 5 | 376002 | DRIVE CHAIN KIT #40 CHAIN AND MASTER LINK | 1 |
| 6 | 321001 | ROTISSERIE AXLE | 1 |

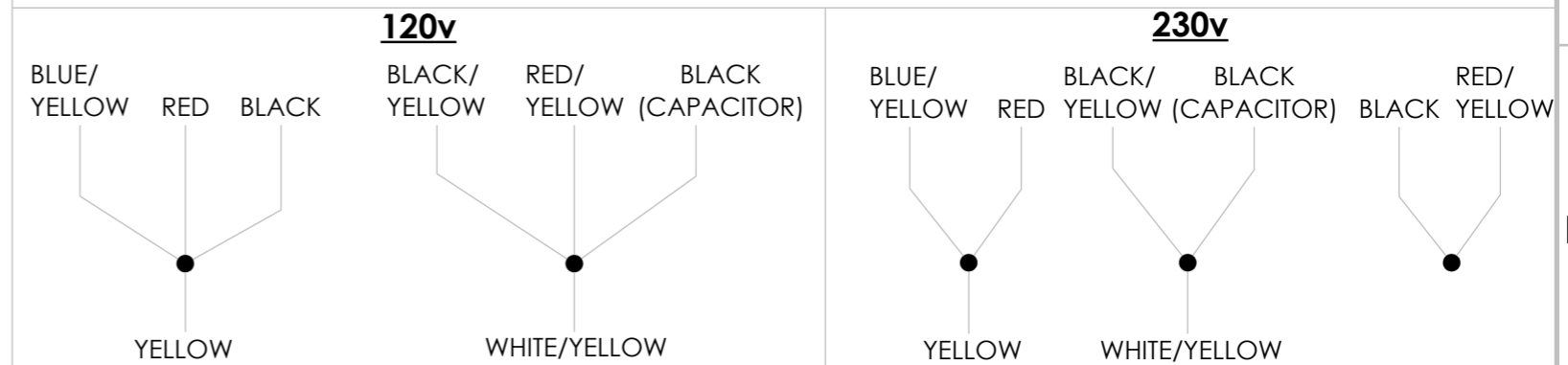
Refer to Sevice Bulletin SP2017-003 for set screw and key stock sizes.



WIRING DIAGRAM (LEESON)



WIRING DIAGRAM (BODINE)



| ITEM NO. | PART NUMBER | DESCRIPTION | QTY. |
|----------|-------------|----------------------------------|------|
| 7 | 351007 | 120v/230v RUN CAPACITOR (LEESON) | 1 |
| 7 | 351013 | 120v RUN CAPACITOR (BODINE) | 1 |
| 7 | 351014 | 230v RUN CAPACITOR (BODINE) | 1 |
| 8 | 351006 | 120v BRAKE (LEESON) | 1 |
| 8 | 351011 | 230v BRAKE (LEESON) | 1 |
| 8 | 351016 | 120v BRAKE (BODINE) | 1 |
| 8 | 351017 | 230v BRAKE (BODINE) | 1 |



PROPRIETARY AND CONFIDENTIAL
 THE INFORMATION CONTAINED IN THIS DRAWING IS THE SOLE PROPERTY OF SOUTHERN PRIDE DISTRIBUTING, LLC. ANY REPRODUCTION IN PART OR AS A WHOLE WITHOUT THE WRITTEN PERMISSION OF SOUTHERN PRIDE DISTRIBUTING, LLC IS PROHIBITED

Southern Pride Distributing, LLC
 401 S. Mill Street
 Alamo, TN 38001
 Ph: 731-696-3175
 Fax: 731-696-3180

| | | | |
|--|-----------------------|---------------|------------------|
| TITLE: | DRIVE SYSTEM ASSEMBLY | | |
| MODEL: | SPX-300 | S/N: | ALL |
| UNLESS OTHERWISE SPECIFIED: DIMENSIONS ARE IN INCHES TOLERANCES LINEAR: +/- 0.005" ANGULAR: +/- 0.1° | SIZE A3 | DWG NO. | SPExpI-R007-REV1 |
| REV | 1 | DATE: | 8/10/2023 |
| DO NOT SCALE DRAWING | | SCALE: | 1:3 |
| DRAWN BY: | | DAVE LEWSADER | SHEET 1 OF 1 |